

EXCLUSIVE LEATHER PROGRAM | 2008



CENTURY FURNITURE®

Infinite Possibilities. Unlimited Attention.™

CenturyFurniture.com



EXCLUSIVE LEATHER PROGRAM | 2008

The “Exclusive Leather Program” offers numerous frames covered in exclusive leathers from Europe and hand woven rugs from Turkey. Each frame has a married leather, finish and nail head (where applicable) to create a gorgeous jewelry piece for fashion-forward clientele. These premium embossed leathers are created on superior cowhides, which have been tanned using a unique combination of Vegetable and Chrome tanning agents. This method allows the embossing to penetrate the hides, ensuring a pronounced grain. Many layers of finishes and stains are then applied to the hides, bringing the leather to life. These finish steps are applied to the individual hides by hand, which can create slight variations in color and effect, from hide to hide. A unique tipping effect is also added to the peaks or spots of the embossing; in some cases this tipping is done with gold or metallic glazes. The hides then receive a clear water-based topcoat, which is also applied by hand, causing slight variations in luster. The topcoat adds a protective coating and will allow the leather to be used in heavy traffic areas. All pieces are only available as shown.



CENTURY FURNITURE®

Infinite Possibilities. Unlimited Attention.™

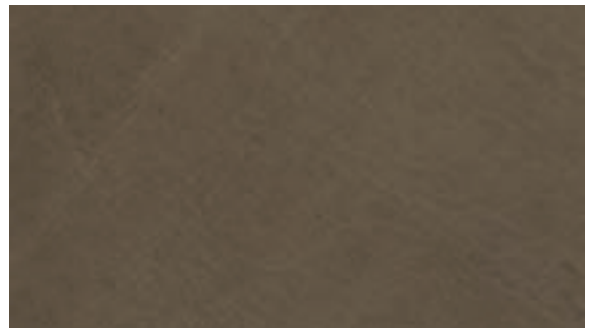
CenturyFurniture.com



3123-MA7 Grande Fauteuil Chair

The outback & inback of this refined, large scale accent chair is covered in "tiger" print hair-on-hide. The seat, arm pads and welt are covered in a rich European full aniline leather, and the entire chair is outlined with a beautiful French natural nail head trim.

Overall: w 34 d 35 h 42
Inside: w 27 d 24 h 21
Seat: 21 Arm: 25
Cover: 3123-EL-4-07
Finish: Amaretto
Nail Trim: #1



3200-M07 Regent Chair

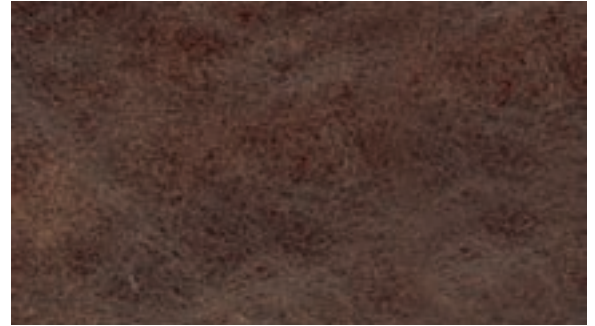
This wonderfully crafted chair is appointed with a Zodiac patterned leather applied to the inback. The outback, seat and welt are accentuated with a soft, supple European aniline leather.

Overall: w 26.5 d 31 h 39
Inside: w 21.5 d 21.5 h 21
Seat: 19 Arm: 21
Cover: 3200-EL-10-07
Finish: Cordovan
Nail Trim: N/A



3214-M06 Heath Chair

This gorgeous piece features a unique European full top grain leather on the seat and a an argyle hair-on-hide leather applied to the inback. The entire piece features a distressed finish with hand-set brass nail heads.



Overall: w 30.5 d 30.5 h 48
Inside: w 20.5 d 22 h 31
Seat: 21 Arm: 26.5
Cover: 3214-EL-8-06
Finish: Amaretto
Nail Trim: #1



3217-MA6 Amboise Chair

Selected from premium European cowhides, the Gilded Tiburon is layered with finishes and glazes that give this leather a deep, rich color. All finishes and gold tipping are applied by hand before the protective top coat is applied.

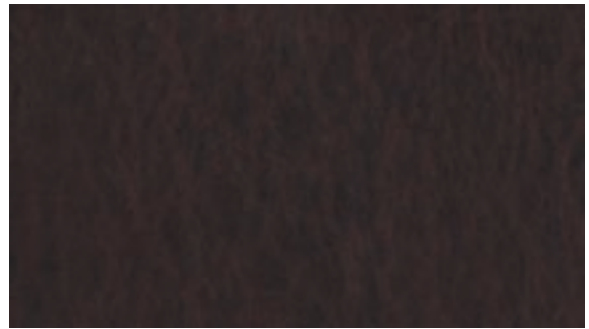


Overall: w 31.5 d 31.5 h 48.5
Inside: w 24.5 d 21.5 h 28.5
Seat: 20 Arm: 28
Cover: 3217-EL-4-06
Finish: Distressed Mahogany
Nail Trim: #1



3217-MA8 Amboise Chair

Premium European leather is featured on the inback of this popular Amboise Chair. The leather is layered with hand finishes and glazes, which give the leather its deep, rich color. The seat and outback are covered in authentic pull-up leather accented with Old Gold Nail Head. This noble aristocratic chair is finished in our Hillsboro finish.



Overall: w 31.5 d 31.5 h 48.5
Inside: w 24.5 d 21.5 h 28.5
Seat: 20 Arm: 28
Cover: 3217-EL-4-08
Finish: Hillsboro
Nail Trim: #29F



3232-MA5 Louis V Wing Chair

This wonderfully carved "Louis V Wing Chair" is perfectly accented with a hand woven exotic rug on the inback insert. The balance of the chair is upholstered in a hand tipped Nubuck leather called Silkwood.



Overall: w 34 d 30 h 44
Inside: w 30 d 20.5 h 23.5
Seat: 20.5 Arm: 25
Cover: 3232-Seiver-4-05
Finish: Edinburgh
Nail Trim: #4



3251-MA5 Jacobean Chair

To enhance the Madera and Sun Valley Collections, this casual, relaxed chair has a wonderful southwest feel. The deep, rich jewel tones of the exotic rug applied to the inback is the perfect highlight to this statement-oriented chair. The balance of the chair is upholstered in our worn, distressed Rockport Saddle leather.

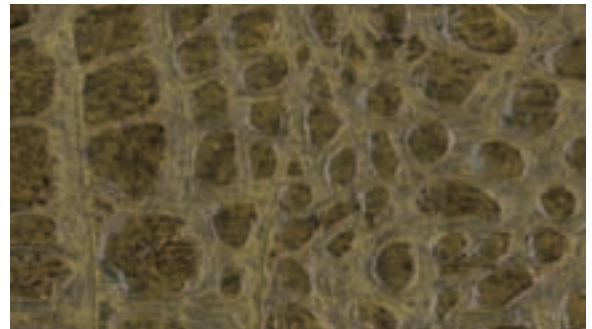


Overall: w 30.5 d 32 h 52
Inside: w 21 d 22 h 31.5
Seat: 20.5 Arm: 28
Cover: 3251-Buket-4-05
Finish: Classic Oak
Nail Trim: #7



3280-M07 Zelda Chair

This chair can be used as a wonderful accent for our Contemporary Classics wood collections. The reptile embossed leather with contrasting welt will add a punch of color to any room.

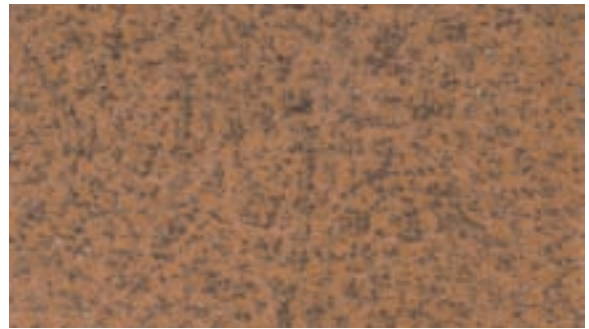


Overall: w 27 d 32.5 h 37
Inside: w 20.5 d 21 h 21
Seat: 19 Arm: 25
Cover: 3280-EL-10-07
Finish: Toffee
Nail Trim: N/A



3288-MA4 Cartouche Chair

Representative of a "Louis XV" style with the "Cartouche" shaped back, this chair is perfect for a large open foyer or family room. The chair back is covered in a hand-wiped, embossed paisley leather from Italy. The large seat is upholstered in a top grain leather that requires hours of hand labor to achieve its authentic aged appearance. It is accented with a beautiful tasseled kidney pillow.

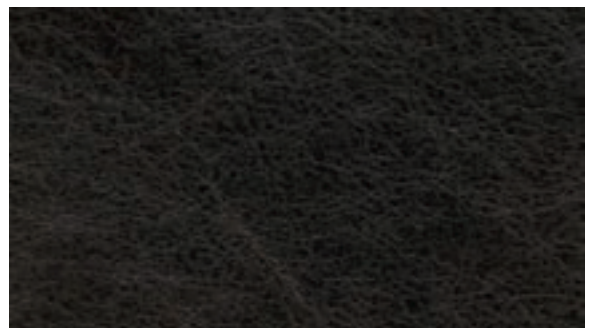
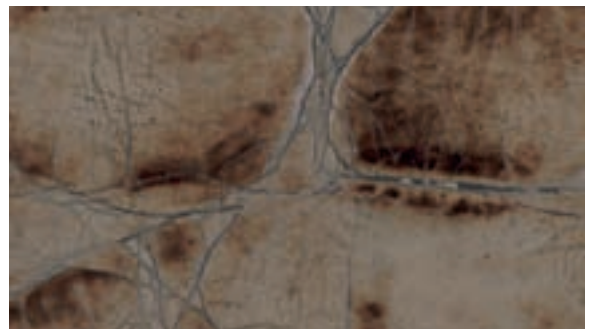


Overall: w 34.5 d 33 h 42.5
Inside: w 28 d 25 h 23
Seat: 21 Arm: 26.5
Cover: 3288-EL-8-04
Finish: Provence
Nail Trim: #4



3289-M07 Veneto Chair

Silhouetting today's upscale handbags, the inback of this refined, elegant frame is adorned with an appropriate embossed leather. The deep, rich main leather and welt provide a beautiful contrast.

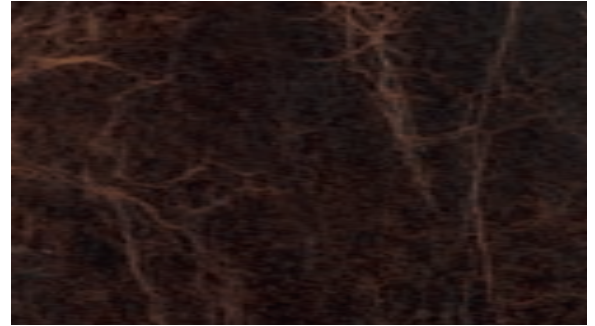


Overall: w 28 d 28 h 41
Inside: w 21.5 d 22 h 22
Seat: 21.5 Arm: 28
Cover: 3289-EL-10-07
Finish: Espresso
Nail Trim: N/A



3292A-MA5 High Back Arm Chair

Presenting one of our best selling occasional chairs with a hand woven Turkish rug applied to the inback insert. The balance of the chair is upholstered in our distressed English Saddle leather.

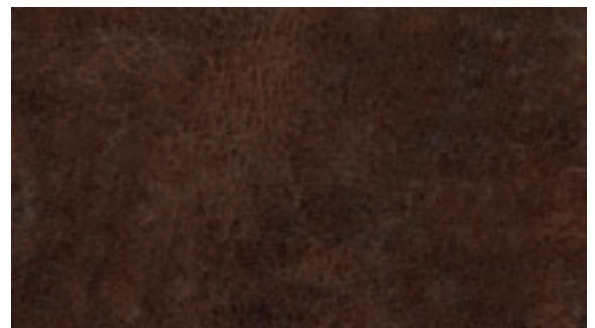


Overall: w 28.5 d 29.5 h 47
Inside: w 22.5 d 21 h 25
Seat: 21 Arm: 31.5
Cover: 3292A-Selchuk-4-05
Finish: Madera
Nail Trim: #4



3292A-M07 High Back Arm Chair

To enhance our Casual Classic wood collection, this attractive chair offers a relaxed southwestern feel. The multi-tone insert applied to the inback is subtly framed with a suede leather to add texture and dimension to this top selling chair.



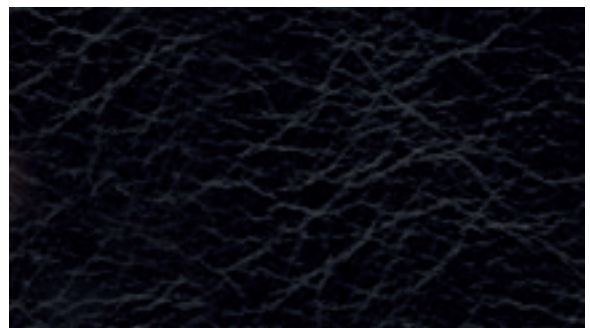
Overall: w 28.5 d 29.5 h 47
Inside: w 22.5 d 21 h 25
Seat: 21 Arm: 31.5
Cover: 3292A-EL-10-07
Finish: Classic Oak
Nail Trim: #31F



3550-MA8 Ellipse Chair

The Ellipse Chair offers clean sophisticated lines for the Contemporary Classics customer. This laser cut hair-on-hide from Italy was developed to emulate the delicate pattern of a European damask print on a creamy background. The seat & outback are out of the highest quality of pure aniline leather to satisfy the most discriminating buyer.

Overall: w 29 d 31 h 38.5
Inside: w 23.25 d 26 h 21
Seat: 17.5 Arm: 23
Cover: 3550-EL-4-08
Finish: Toffee
Nail Trim: #39F



3691-MA5 Louis IV Fauteuil Chair

This refined, elegant accent chair is covered in a Zebra print hair-on-hide, which is applied to the inback and outback. The seat and arm caps are covered in a rich full aniline leather from Europe. The entire chair is outlined with beautiful brushed nickel nail head trim.

Overall: w 27.5 d 29.5 h 42.5
Inside: w 23.5 d 21 h 21.5
Seat: 21 Arm: 27.5
Cover: 3691-EL-4-05
Finish: Quicksilver Black
Nail Trim: #24



369I-MA7 Louis IV Fauteuil Chair

An Assyrian Shield Medallion applied to the inback characterizes this elegant accent chair. A gorgeous metallic full aniline leather covers the seat and armpad for a truly majestic experience.

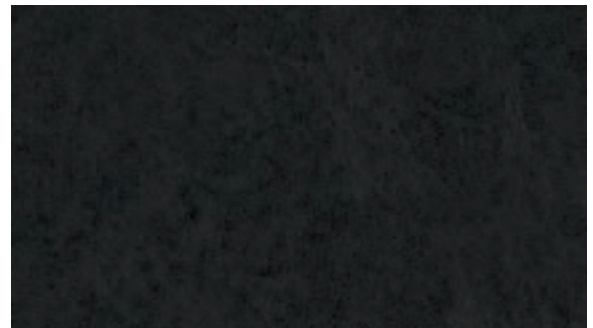


Overall: w 27.5 d 29.5 h 42.5
Inside: w 23.5 d 21 h 21.5
Seat: 21 Arm: 27.5
Cover: 369I-EL-4-07
Finish: Lynx
Nail Trim: #24

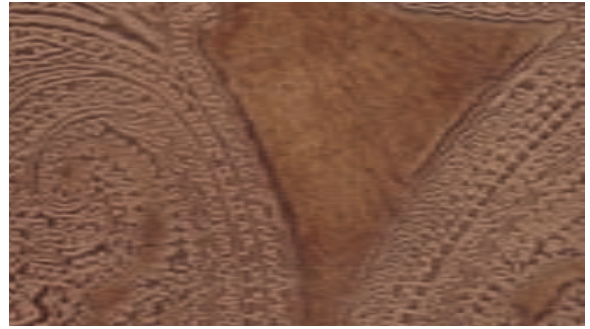


369I-MA8 Louis IV Fauteuil Chair

This refined and elegant Louis IV Fauteuil Chair is covered in a Leopard print hair-on-hide, which is applied to the inback and outback. The seat and arm caps are covered in a rich tight grain full aniline leather from Europe. The entire chair is outlined with beautiful bronze nailhead that will enhance any room with a smart stylish look.



Overall: w 27.5 d 29.5 h 42.5
Inside: w 23.5 d 21 h 21.5
Seat: 21 Arm: 27.5
Cover: 369I-EL-4-08
Finish: Chestnut
Nail Trim: #30F



3901-MA8 Caperana Banquette

Adorned with a warm milk chocolate leather on the seat and outback, the Caperana Banquette will command a captive audience. The inback is covered in a hand-stained and hand-painted embossed leather direct from Italy, which presents a bold yet delicate look. This banquette will create a refreshing new dining room look.

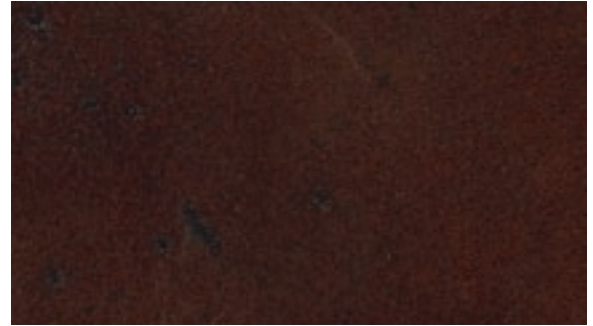
Overall: w 61 d 32 h 40
Inside: w 53.5 d 18.5 h 19.5
Seat: 20.5
Cover: 3901-EL-4-08
Finish: Tobacco
Nail Trim: N/A



3994-MA8 Madera Settee

This Madera Collection Settee features "Tasmania," a unique hair-on-hide, with a color blend of black, brown, and camel on the inback. The seat has a full top-grain leather outlined with woven Crestwood cord and Aberdeen suede on the outback. This is an ideal piece for a dining room, foyer or fireplace setting.

Overall: w 48.75 d 26.5 h 45.75
Inside: w 41 d 18.5 h 24.75
Seat: 21 Arm: 28
Cover: 3994-EL-4-08
Finish: Madera
Nail Trim: N/A



LR-18173-MA7 Moorehead Chair

This statement-oriented chair is upholstered in our popular Uptown Cafe leather. Zumanity hair-on-hide is applied on the inback, and one side of the kidney pillow is upholstered in our new Bonita Tortoise Shell leather.

Overall: w 37.5 d 42 h 45
Inside: w 22.5 d 22 h 23.5
Seat: 21.5 Arm: 24.25
Cover: LR-18173-EL-4-07 (Inback Only)
Finish: Cordovan
Nail Trim: N/A



LR-28192-MA7 Outback Sofa

A sophisticated Santa Fe look is portrayed on this incredible sofa. The inback, seat and throw pillows are hand-stitched. Lizard leather accents and rustic brass nail head add the perfect touch.

Overall: w 72.5 d 43.5 h 42
Inside: w 61.25 d 22 h 20
Seat: 22 Arm: 26.5
Cover: LR-28192-EL-4-07
Finish: Amaretto
Nail Trim: #4 (Arms); #22 (Spaced on Base)



LR-48170-MO6 Woodson Love Seat

Jacobean traits with gracefully carved legs and straight lines best depicts this new love seat. The inside back is upholstered in a sewn diamond leather panel that has been buffed by hand. The hair-on-hide throw pillows are trimmed with a woven welt and with metal studs. The balance of the piece is upholstered in a stunning pull-up leather.

Overall: w 56 d 37 h 47
 Inside: w 46 d 19 h 27
 Seat: 21 Arm: 29
 Cover: LR-48170-EL-8-06
 Finish: Amaretto
 Nail Trim: #4 (Arms & Wing); #22 (Spaced on Base)

NUMERICAL INDEX

	page number		page number
3123-MA7 Grande Fauteuil Chair	3	3292A-MO7 High Back Arm Chair.....	8
3200-MO7 Regent Chair	3	3550-MA8 Ellipse Chair	9
3214-MO6 Heath Chair.....	4	3691-MA5 Louis IV Fauteuil Chair	9
3217-MA6 Amboise Chair.....	4	3691-MA7 Louis IV Fauteuil Chair	10
3217-MA8 Amboise Chair	5	3691-MA8 Louis IV Fauteuil Chair	10
3232-MA5 Louis V Wing Chair.....	5	3901-MA8 Caperana Banquette	11
3251-MA5 Jacobean Chair	6	3994-MA8 Settee.....	11
3280-MO7 Zelda Chair.....	6	LR-18173-MA7 Moorehead Chair	12
3288-MA4 Cartouche Chair	7	LR-28192-MA7 Outback Sofa	12
3289-MO7 Veneto Chair.....	7	LR-48170-MO6 Woodson Love Seat.....	13
3292A-MA5 High Back Arm Chair.....	8		



CENTURY FURNITURE®

Infinite Possibilities. Unlimited Attention.™

CenturyFurniture.com

P.O. Box 608 | Hickory, NC 28603

Main Office: 828.328.1851
Customer Service Fax: 828.326.8224

360/FCC/HA/3.5M/3-08

©2008. Century Furniture



Chain of Custody Certificate BV-5FICOC-210028